



## RAGIN' CAJUNS LOOKING FOR A WAY TO HELP DURING THE COVID-19 PANDEMIC CAN MAKE HOME-SEWN FACE MASKS FOR DISTRIBUTION TO LOCAL HEALTH CARE FACILITIES.

Donated masks will be for patients, allowing health care workers to conserve the supply of personal protective equipment (PPE) for areas that require medical-grade equipment. Home-sewn masks aren't a replacement for medical-grade PPE and will not be used where proper PPE is required.

**Please note:** It is essential that nobody involved in the creation, distribution or delivery of homemade masks have any symptoms of COVID-19 (fever, cough, shortness of breath) or have recently been exposed to anyone experiencing these symptoms or who has tested positive for COVID-19.

Masks in all sizes are needed and can be made following the instructions in our downloadable template. Once finished, masks can be dropped off at any of the following locations in Lafayette or mailed to the United Way of Acadiana.

### Donation Drop-offs spots in Lafayette:

**Lafayette General Medical Center** is accepting donated masks via a self-service drop-off process at the United Way of Acadiana.  
**215 E. Pinhook Road.**

Donations will be accepted Monday - Friday from 8 a.m. - 12 p.m. Items may also be shipped to this address.

**Hospice of Acadiana** is accepting mask donations anytime via a drop box in front of their location.  
**2600 Johnston St.**

**Lola Pink Fabric** is accepting mask donations Tuesday-Friday from 10 a.m.-4 p.m. and Saturday from 10 a.m.-2 p.m.  
**123 Arnould Blvd.**

**A&A Fabric** is accepting donations Monday-Friday from 9 a.m.-3 p.m. and on Saturday from 9 a.m.-Noon, in front of their store. They are also accepting donations of clear ziplock-style bags. These are used to package the masks for distribution.  
**1209 Albertson Pkwy.**

## MATERIALS NEEDED:

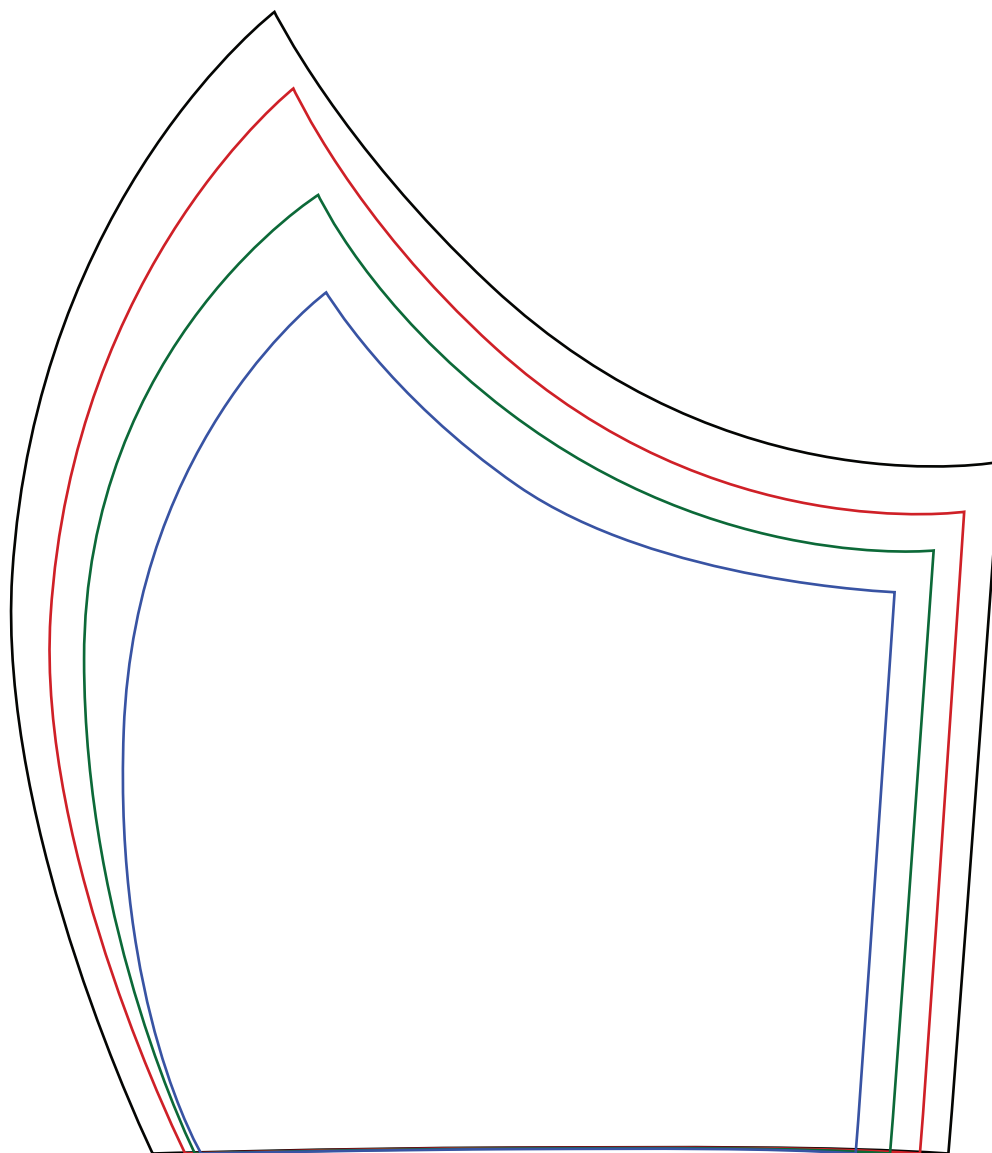
- Fabric for outer layer. Use 100% cotton, muslin, pillow ticking, or breathable cotton/poly blend. Clean cotton bedsheets can be used as long as they are clean and unstained.
- 64 inches of either 3/8" or 1/2" cotton twill tape, per mask. Ties can also be created from fabric, and instructions for those are included in the step-by-step guide.
- Sewing machine
- Thread
- Printed mask pattern
- Cutting device (scissors or rotary cutter)

### Getting ready:

- Wash all fabric before cutting.
- Print the pattern and cut out the size mask you want to make on card stock, or trace your printed piece onto cardboard for a more sturdy pattern, if you are using a rotary cutter.
- Cut multiple pieces of the fabric pattern by folding cloth into stacked layers. Tip: Cutting four layers is easily done with a rotary cutting wheel.
- If using a printed fabric, be very careful to ensure that each layer is mirrored and cut right-side-up. Otherwise the print will be on the wrong side or upside down.
- Use two pieces for each layer. Carefully cutting in layers of two or four helps ensure everything lines up.

### Keep in mind:

- Masks must be able to hold up to commercial washing.
- Masks should not be too heavy or hot on the wearer's face.
- Work in batches (cut many, then sew many).
- Work in a team with others if they are in your home.
- Every mask matters.



2 inches



Adult Male



Children 7-12 years old

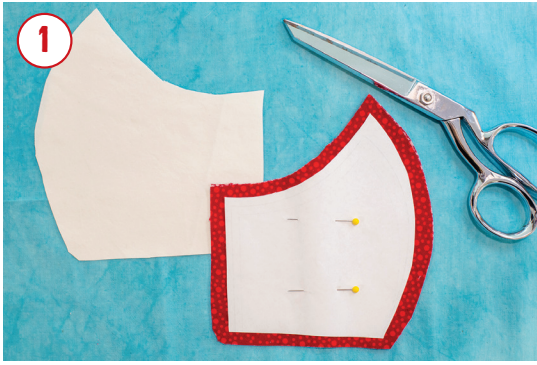


Adult Female and teenagers



Children 3-6 years old

## STEP-BY-STEP INSTRUCTIONS



Fold the main fabric in half and then in half again, making sure to keep the pattern right-side up if you are using a patterned fabric. Pin the paper pattern onto the four layers of fabric. Cut the fabric with 1/4" allowance around the pattern. (You can use a different color fabric for the lining, like we have in the guide.)



Remove pins and paper pattern, putting the two pieces together with the patterned sides facing each other. Repeat with second two pieces for the lining. Sew the centerline of the face mask, stitching about 1/4" from the edge. Trim threads at the ends. Repeat with the lining.



Clip the curve along the seam allowance, about 1/4" between clips. Be careful to not accidentally clip the stitches.



Press the seam allowance to one side and then add a topstitch near the seam line on the outward-facing side. Repeat on the liner.



Flip the liner layer so it is right side out and place on top of the outer layer—the finished side of both pieces should be face-to-face, with the seam allowances exposed.

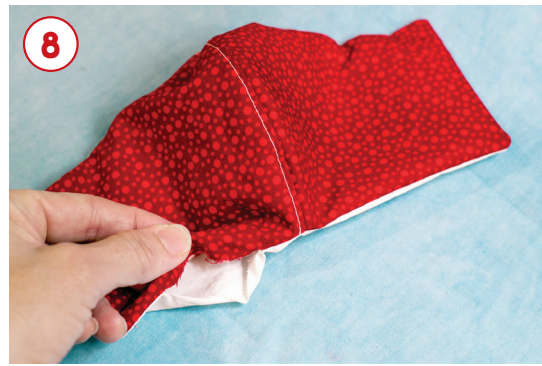


Align the center seam lines and the edges, and pin together.

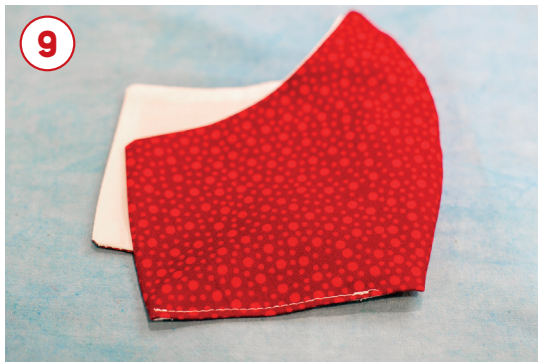




Stitch together the two pieces, leaving a 2" gap unsewn on the bottom edge.



Turn the face mask right side out, using something pointy (but not sharp!) to push out the corners and the bridge of the nose.



Press with an iron, turning the edges of the 2" gap in, and sew closed.



Cut 32" of the cotton twill tape/ribbon, find the center and pin it to the center of the ear-edge of the mask. Stitch it securely to the mask, as illustrated in the photo. Keep the ends from fraying by either knotting them or folding the raw ends over twice and topstitch it in place.



If you cannot find cotton twill tape/ribbon, you can make your own by cutting two strips of fabric 32" long and 2" wide. Fold both the edges in  $\frac{1}{2}$ " while pressing with an iron for the length of the strip. Then fold the strip in half and press the two halves together to create a  $\frac{1}{2}$ " strip. This can be attached to the mask by stitching the edges of the  $\frac{1}{2}$ " strip together from one end to the other, attaching it to the mask in the center.




---

*Thank you for helping your Ragin' Cajuns community!*

---